

DIRECTIONS

The field trip takes us west of Denton along highway 380 to the Bridgeport Lake area.

STOP 1. DUCK CREEK FORMATION (Kdc). Arrive ~9-9.15

Route: Highway 380 west of Denton. Stop1 is approximately 200 yards before county line.



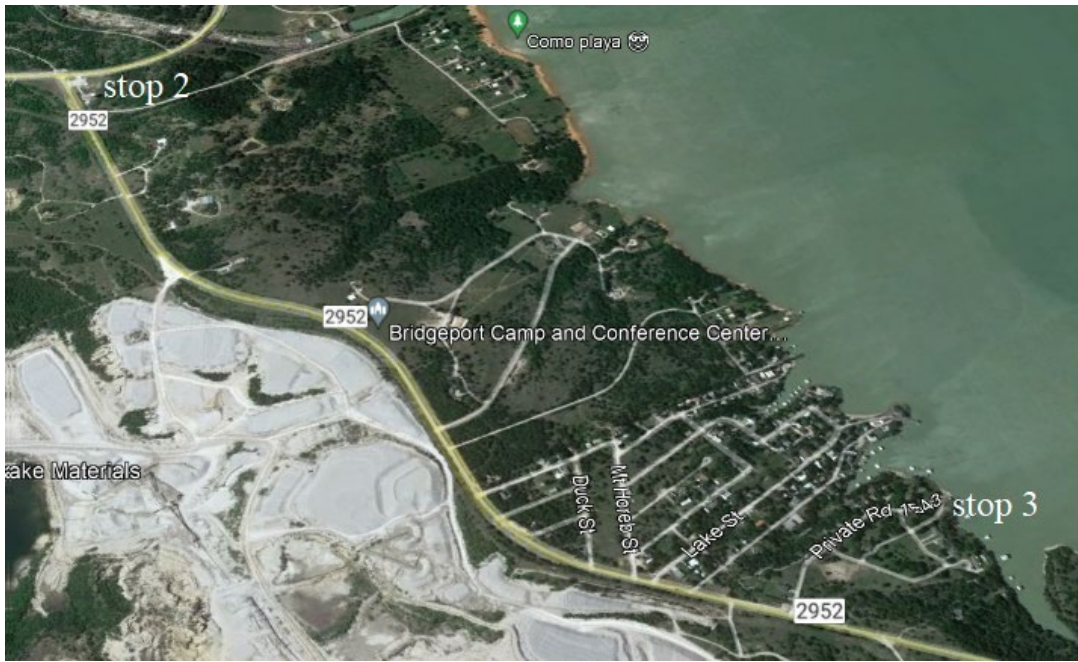
Stop 1. Park near here, walk back east ~200 yards.

STOP 2. CHICO RIDGE LIMESTONE (IPcr) Highway 380 through Decatur, to Bridgeport, north on 1658, stop at intersection with 2952.



STOP 3. JASPER CREEK FORMATION (IPjc)

Route: Follow 2952 up the hill to 1543 (private road; just past oil tanks). Follow 1543 to left down to lake shore.



STOP 4. JASPER CREEK FORMATION (IPjc)

Route: go back to 1658 and follow the road around corner to bridge over Bridgeport Lake spillway – park on side of road near bridge.



STOP 5. JASPER CREEK FORMATION (IPjc; may be skipped, depending on weather/time):

Route: Follow 1658 down over Bridgeport Lake dam, take access road to public boat ramp.
LUNCH IN BRIDGEPORT.

STOP 6. VENTIONER FORMATION (IPv)

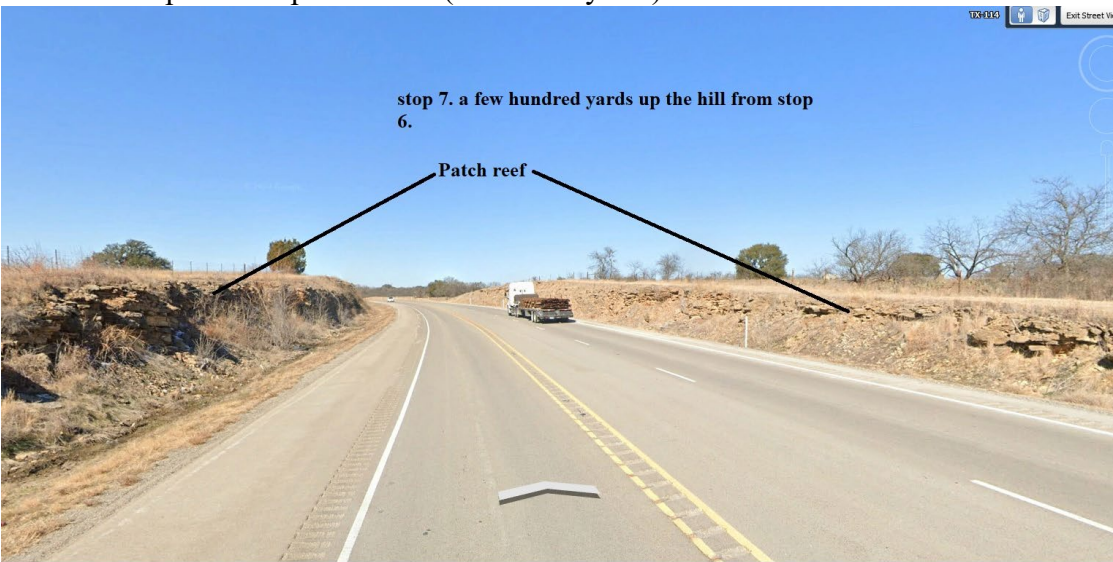
Route: 380 west over Bridgeport Lake, to about 2 miles past Vineyard. Park on side of road.



STOP 6, LARGE ROAD CUT NEAR TOP OF HILL. SANDSTONE LAYERS EXPOSED. About 2 miles past Vineyard.

STOP 7. VENTIONER FORMATION (IP_v)

Route: 380 up to the top of the hill (about 300 yards). Park on side of road.



STOP 8. GOODLAND LIMESTONE (K_{gw})

Route: 380 to east of Decatur (East of Highway 51), behind shell gas station on hill.



